

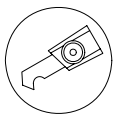
RC Conversion Kit for Tamiya 1/35 Challenger 2 Tank

with MTC-2, ACU and GSU

User Manual

Attention!

- 1) This kit is designed for experienced model makers. It may be difficult for beginners. Please read this manual thoroughly to see if you have the required skills and tools.
- 2) Cutting tools are used frequently in this kit. Extra care should be taken to avoid injury. Wear hand gloves and eye protection spectacle if necessary.
- 3) Keep room well ventilated when working with cements, paints and organic solvents.
- 4) Visit www.35rctank.com for addition tips and update information.



scriber



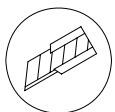
apply cement



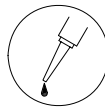
side cutter



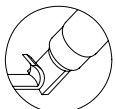
do not apply cement



modelling knife



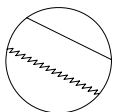
apply instant glue



carving knife



wait overnight



hand saw

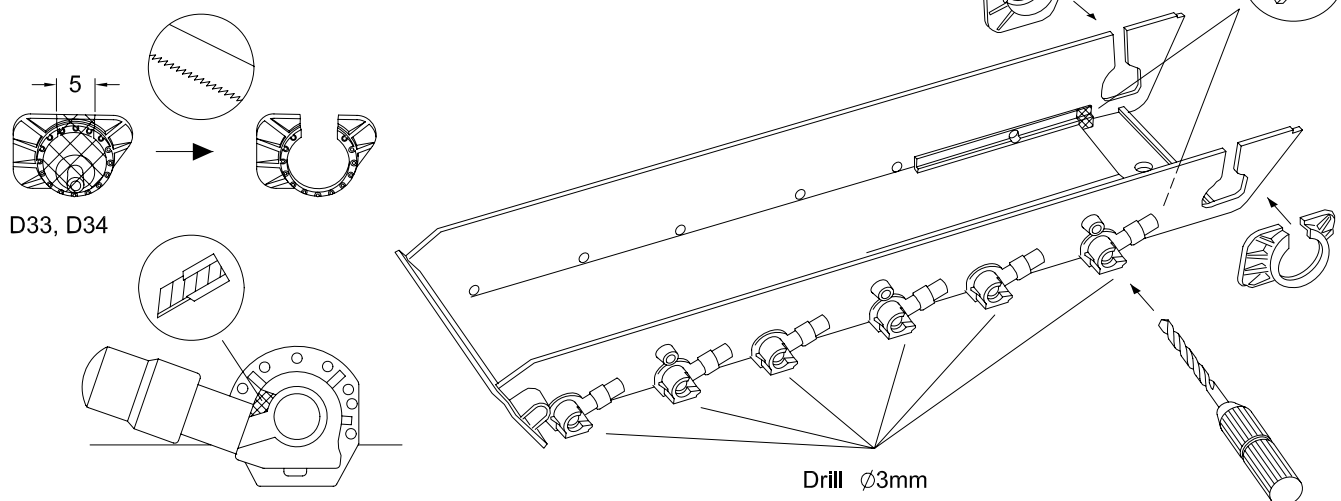


solder

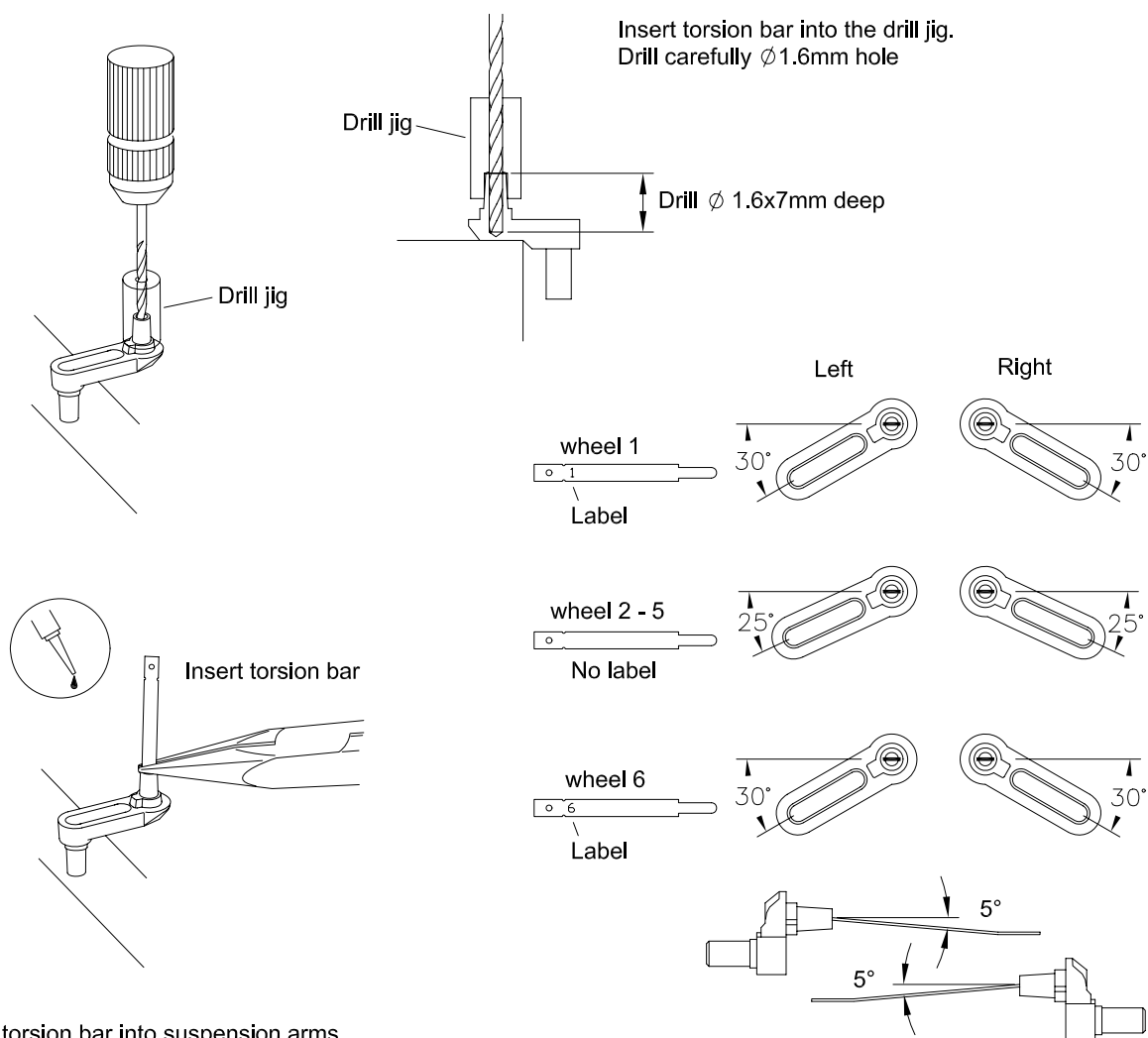


Attention!

1 Lower hull

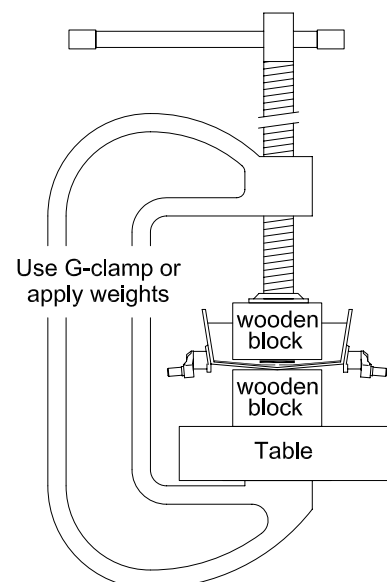
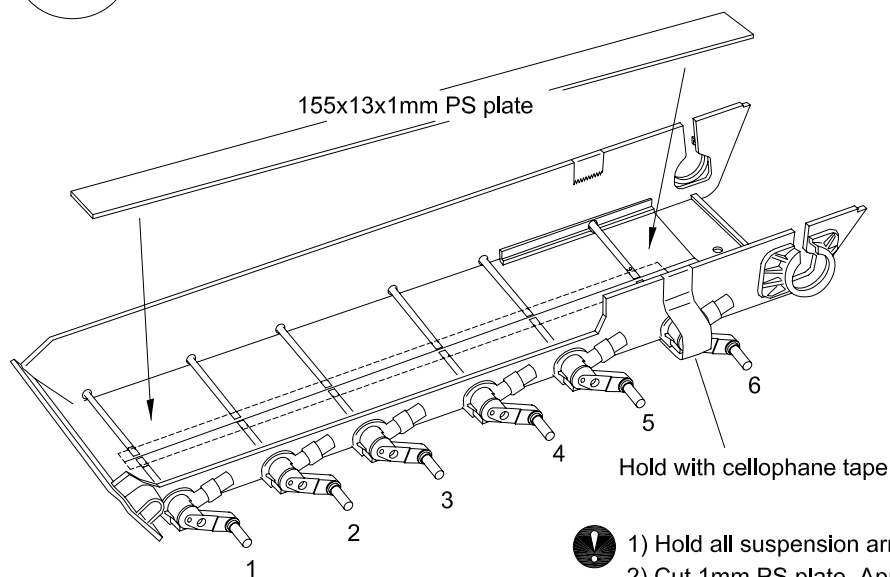


2A Suspension arms

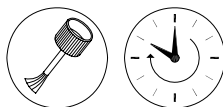


Insert torsion bar into suspension arms.
Take care the difference of thickness and angle
of torsion bars. Apply instant glue to secure.
Wait a few hours for instant glue to cure completely.

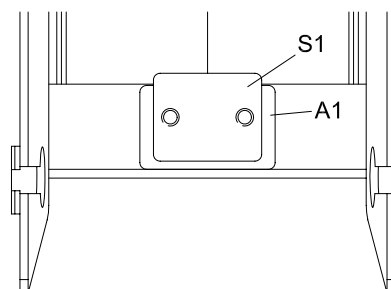
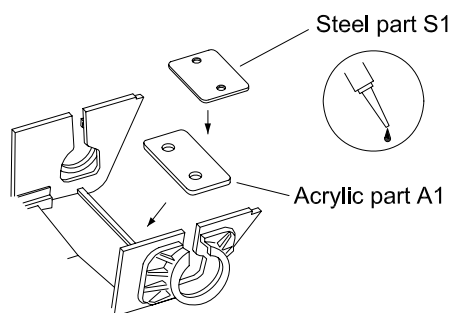
2B Suspension arms



- 1) Hold all suspension arms with cellophane tape.
 - 2) Cut 1mm PS plate. Apply lots of cement to PS plate and lower hull.
 - 3) Use G-clamp or add weights to press PS plate firmly to lower hull.
 - 4) Wait till cement has cured completely.
- Attention - Do not use instant glue! It will spread along torsion bars and stick suspension arms.



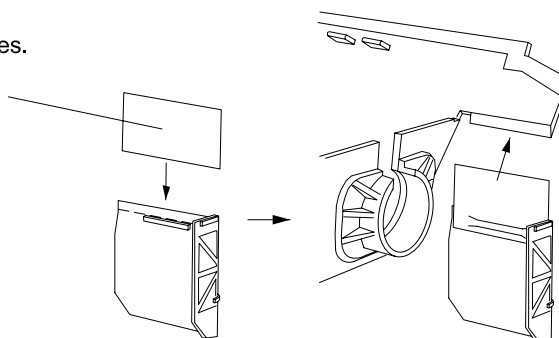
3 Motor mount



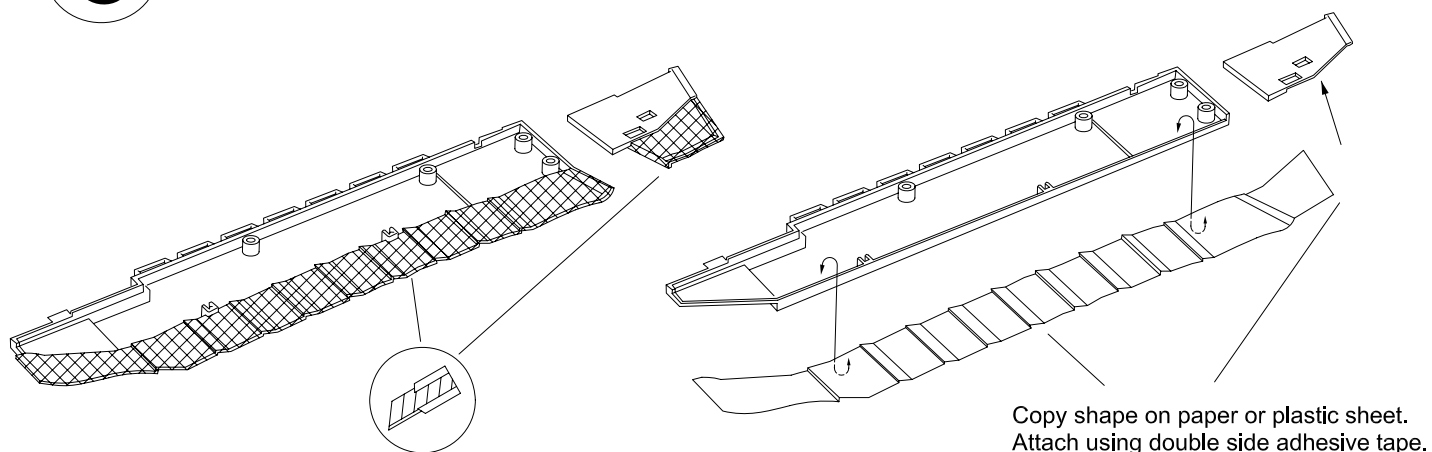
- Position A1, S1 at centre line of lower hull.
Avoid instant glue entering screw thread.

4 Flexible mud guide (optional)

Use adhesive tape to attach mud guides.
Do not use permanent glue.

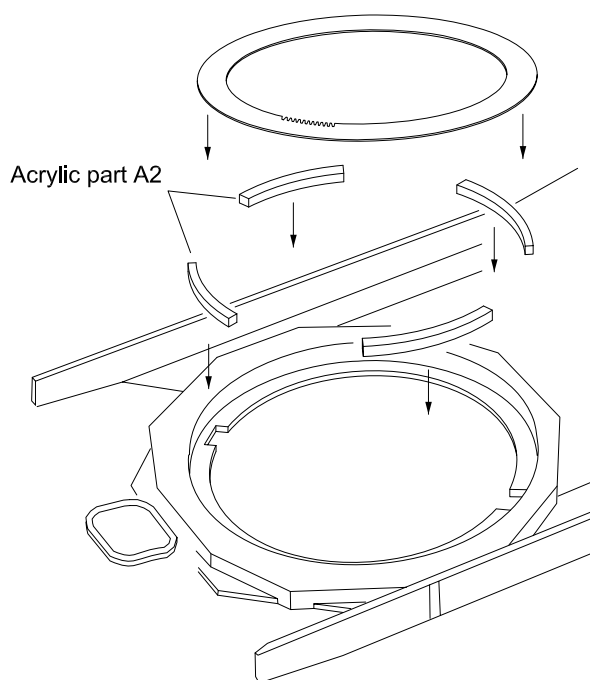
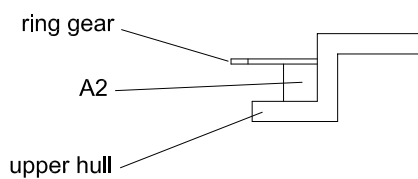


5 Flexible side skirts (optional)

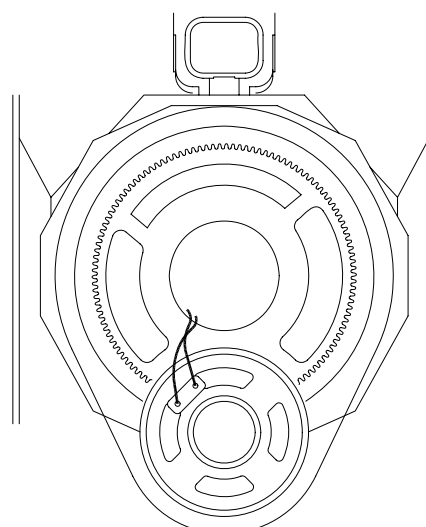
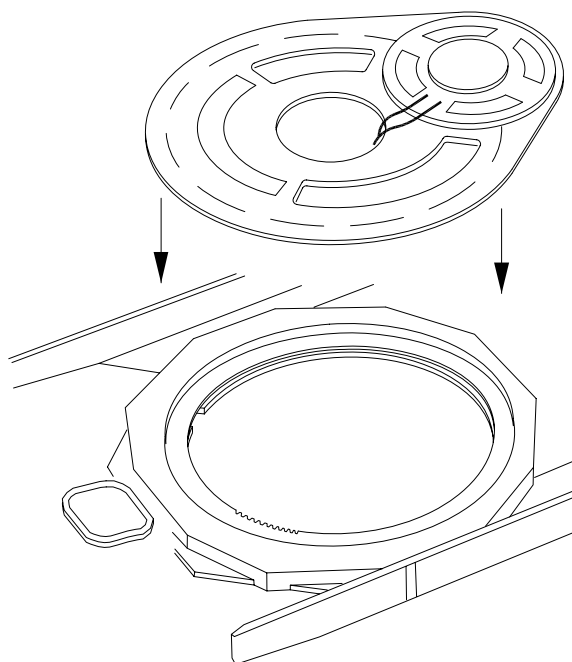


6 Turret ring gear

! Keep gear teeth away from instant glue.

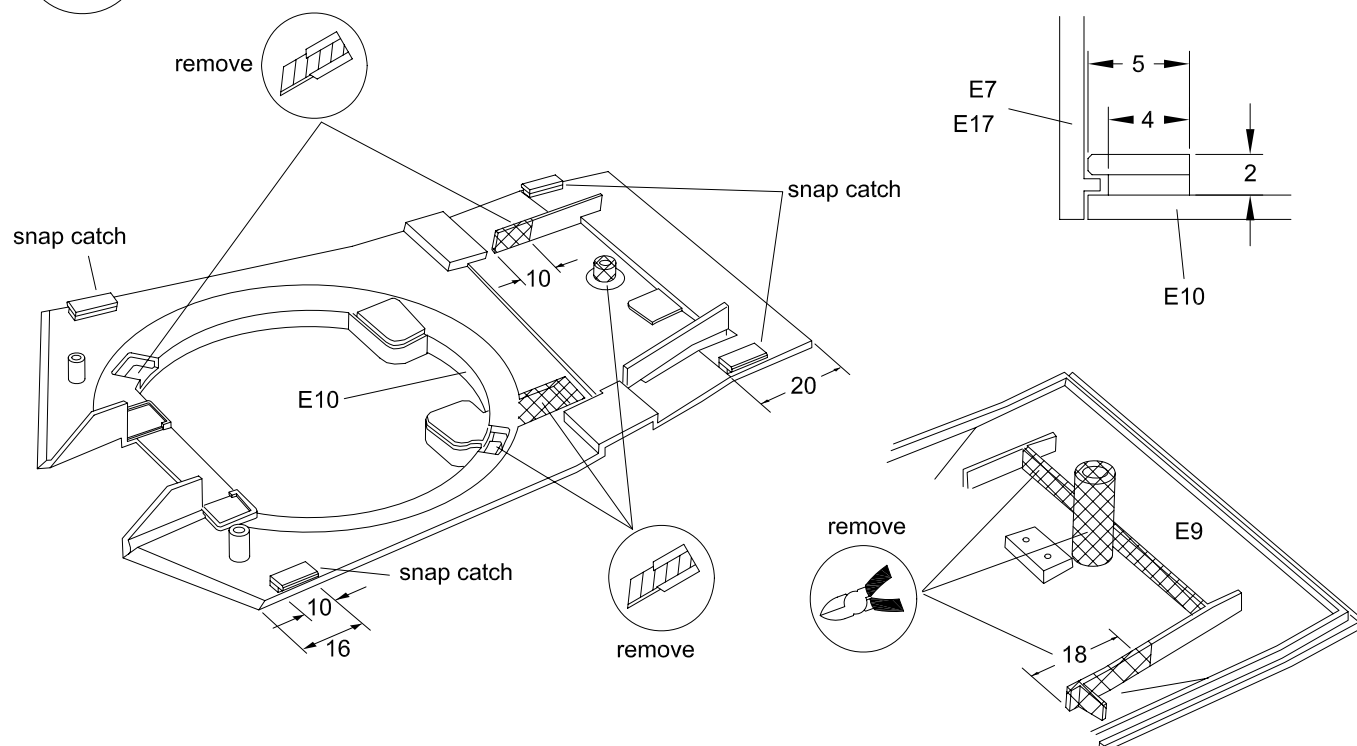


7 Speaker

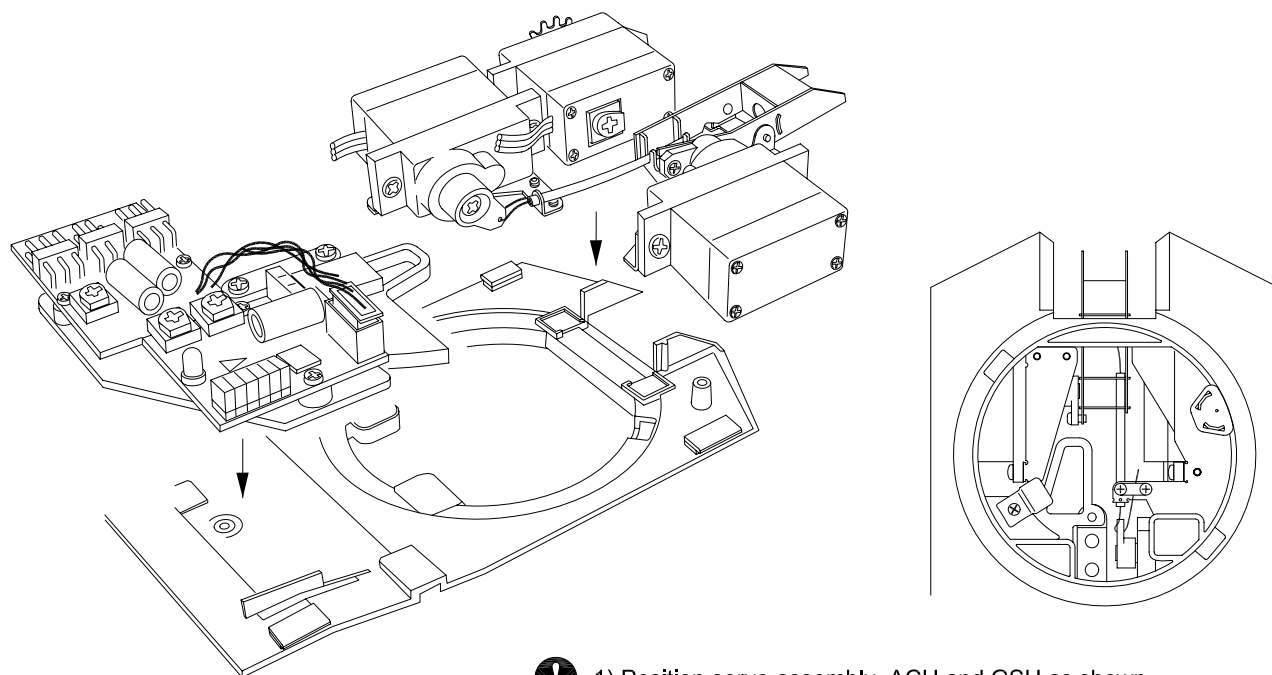


8 Turret

! Use 1mm PS plate to make four snap catch.

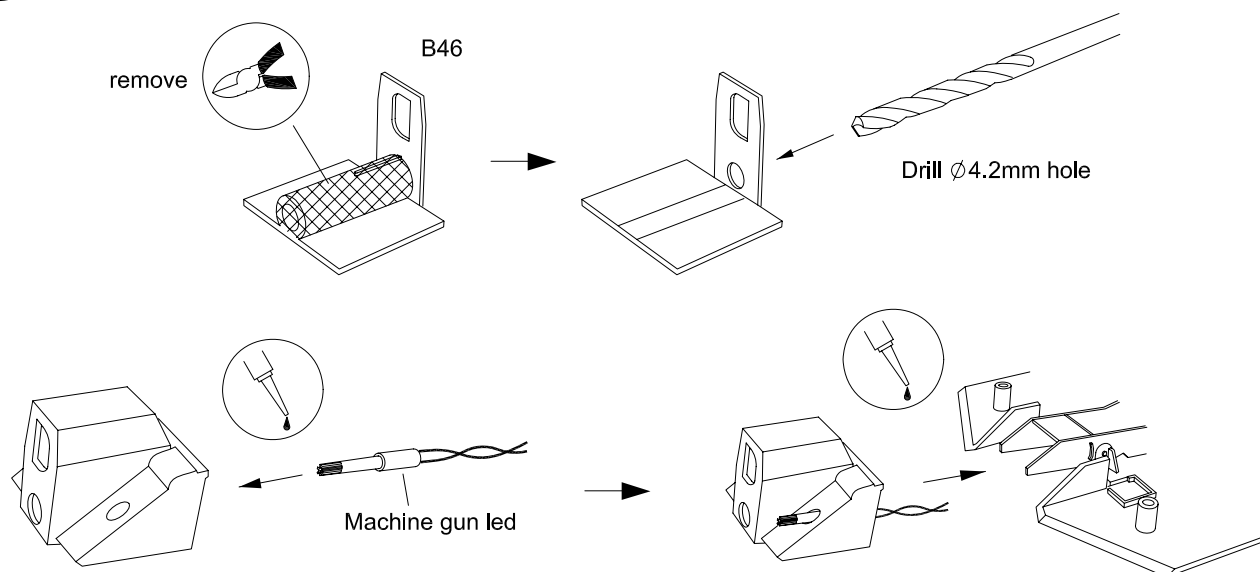


9 Servo assembly, ACU and GSU

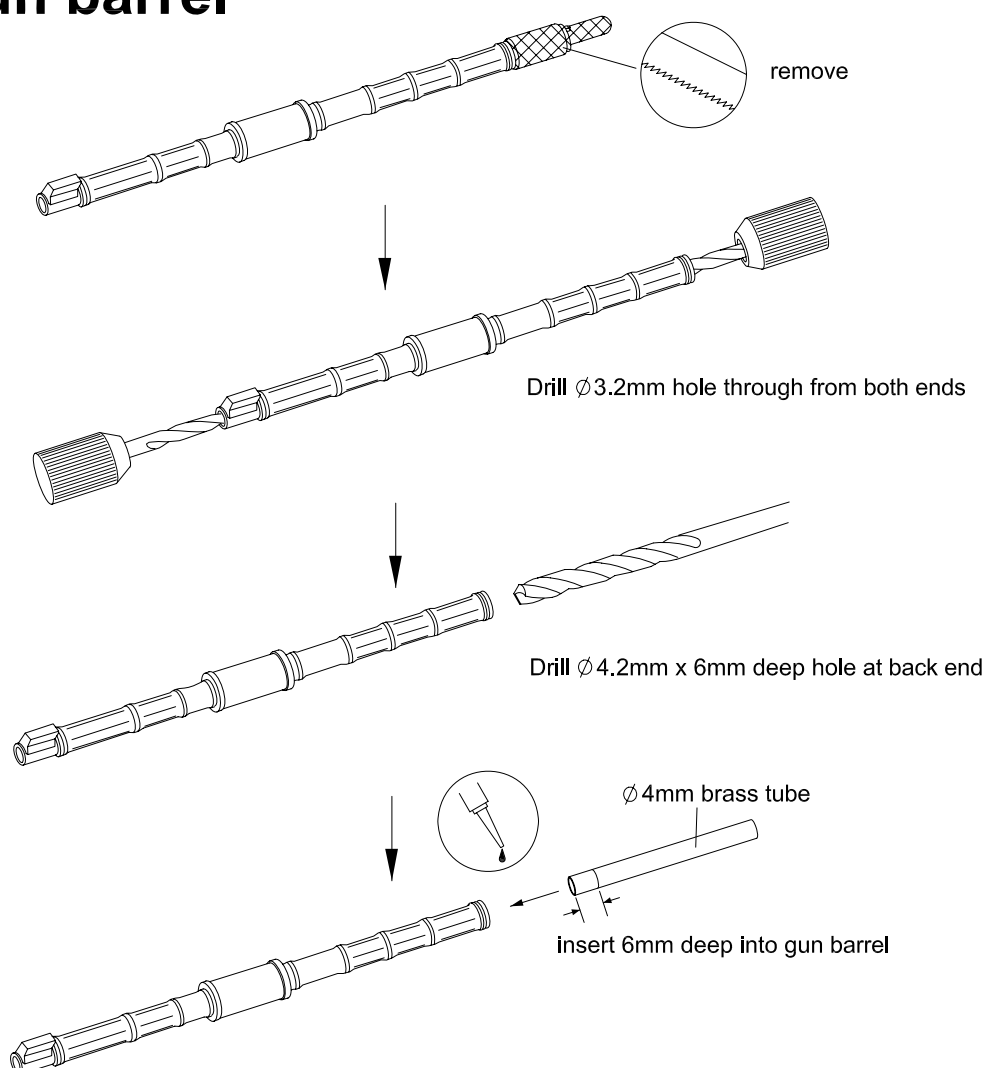


- ! 1) Position servo assembly, ACU and GSU as shown.
 2) Check alignment before applying instant glue.
 3) Apply instant glue carefully. Too much glue will stick moving parts!

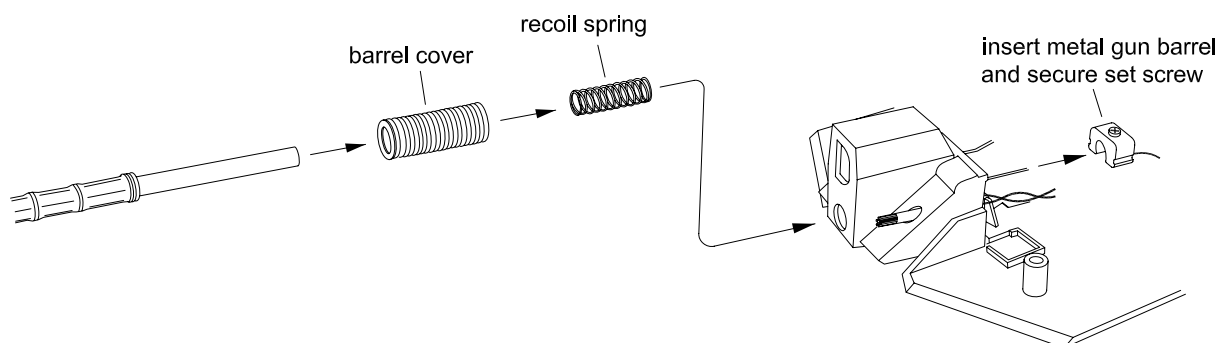
10 Gun mantlet



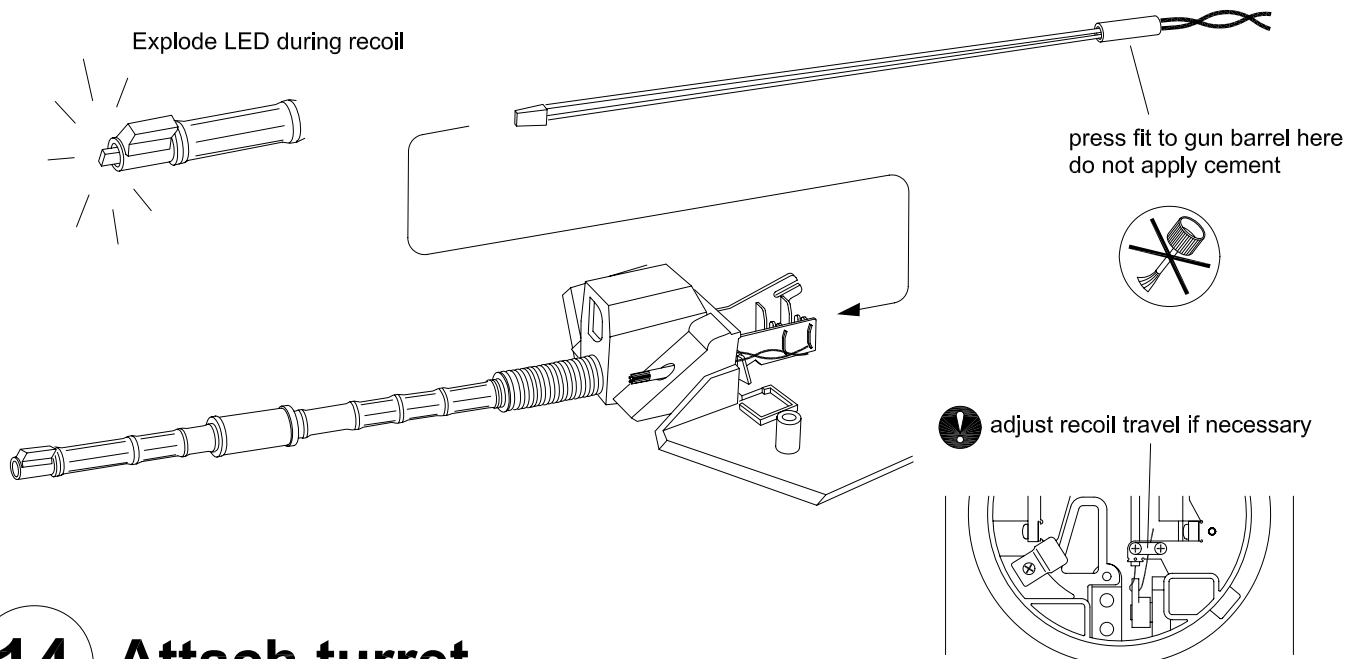
11 Gun barrel



12 Attach gun barrel

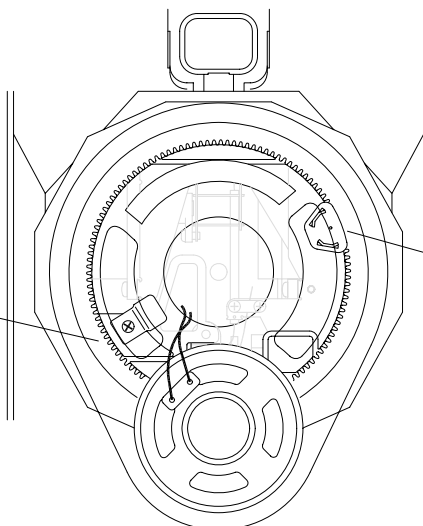
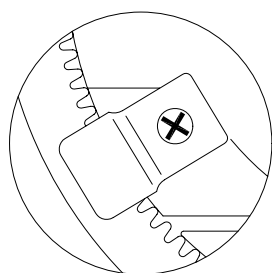


13 Attach gun flash LED

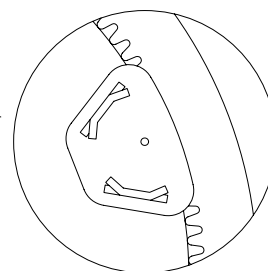


14 Attach turret

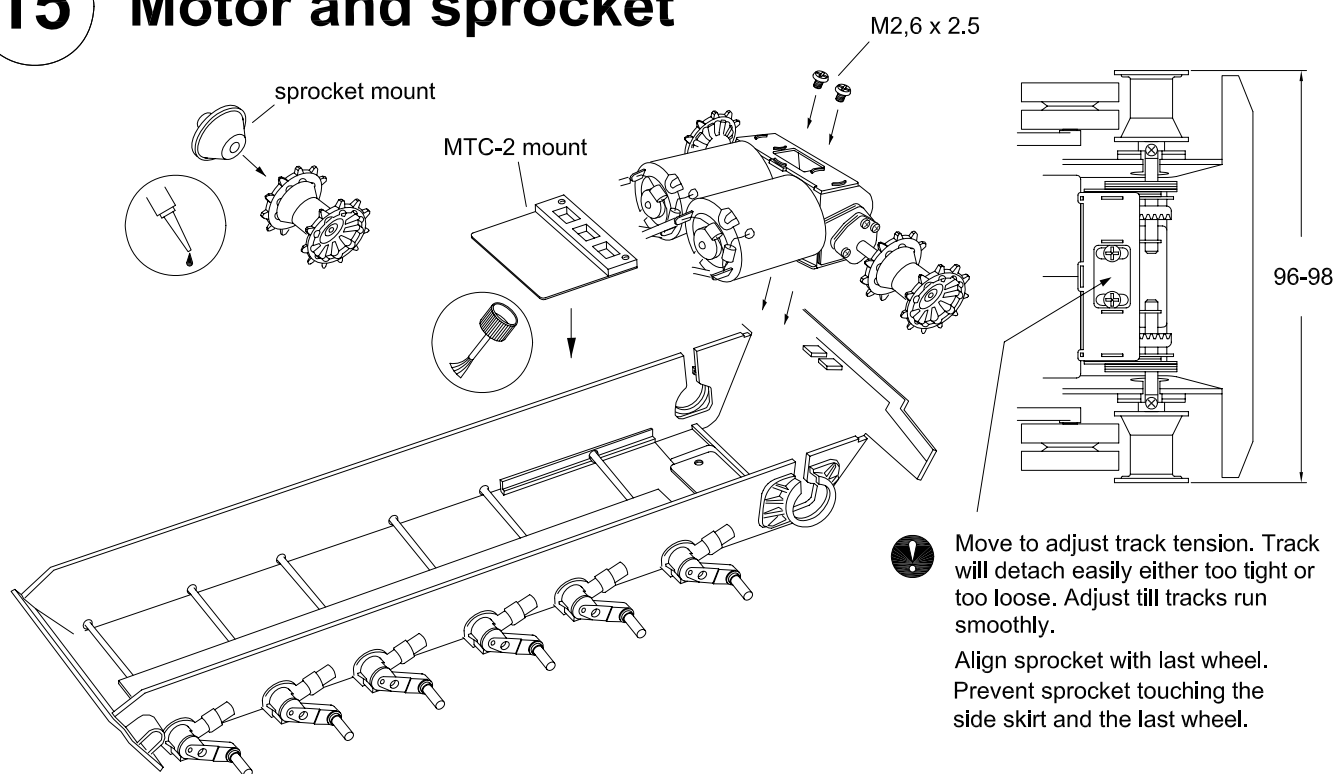
Step2:
Rotate and secure the locking plate



Step1:
Engage pinion into ring gear.

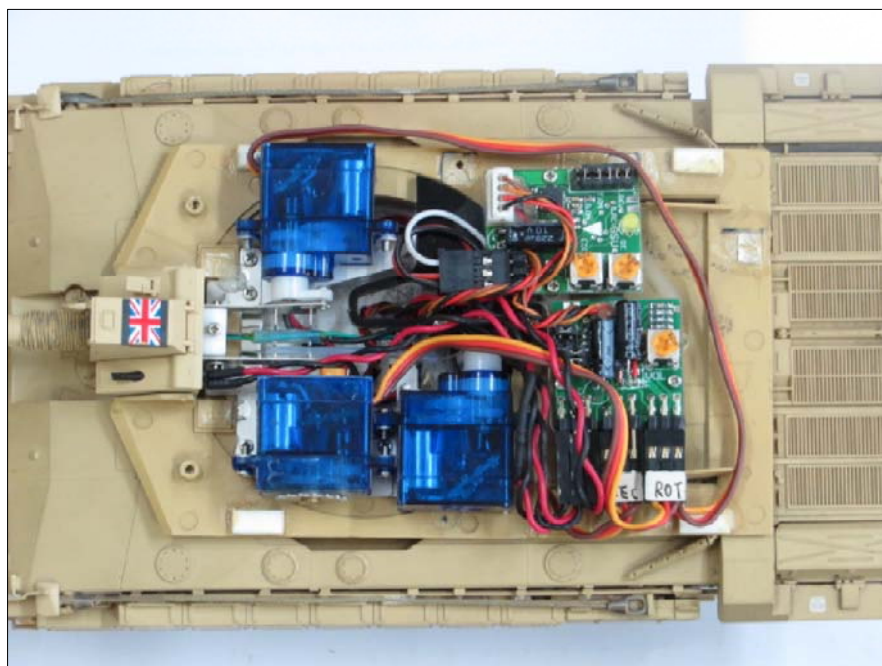


15 Motor and sprocket



16 Turret connections

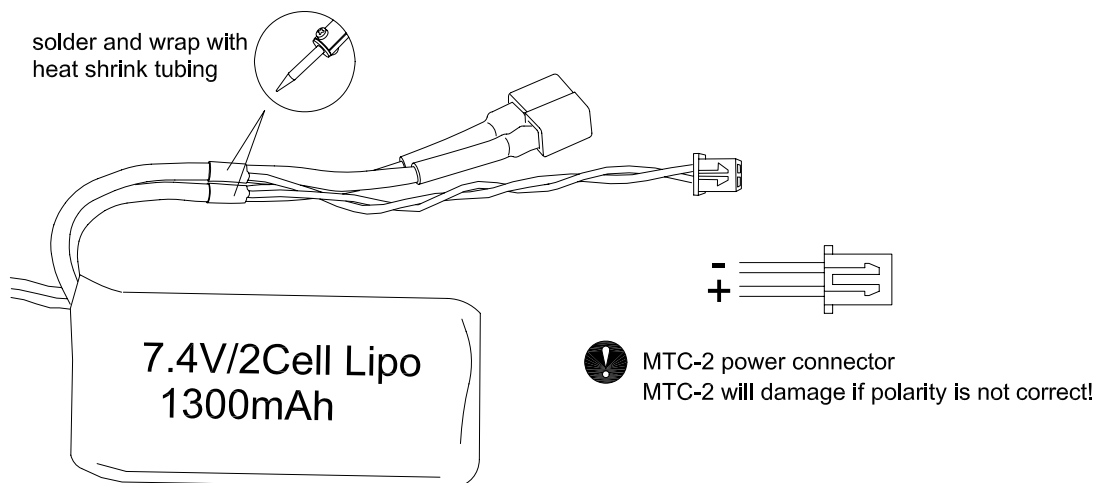
- ! 1) Connect servos, speaker and LEDs according to ACU and GSU manual.
- 2) Tie up cables neatly and away from moving parts.



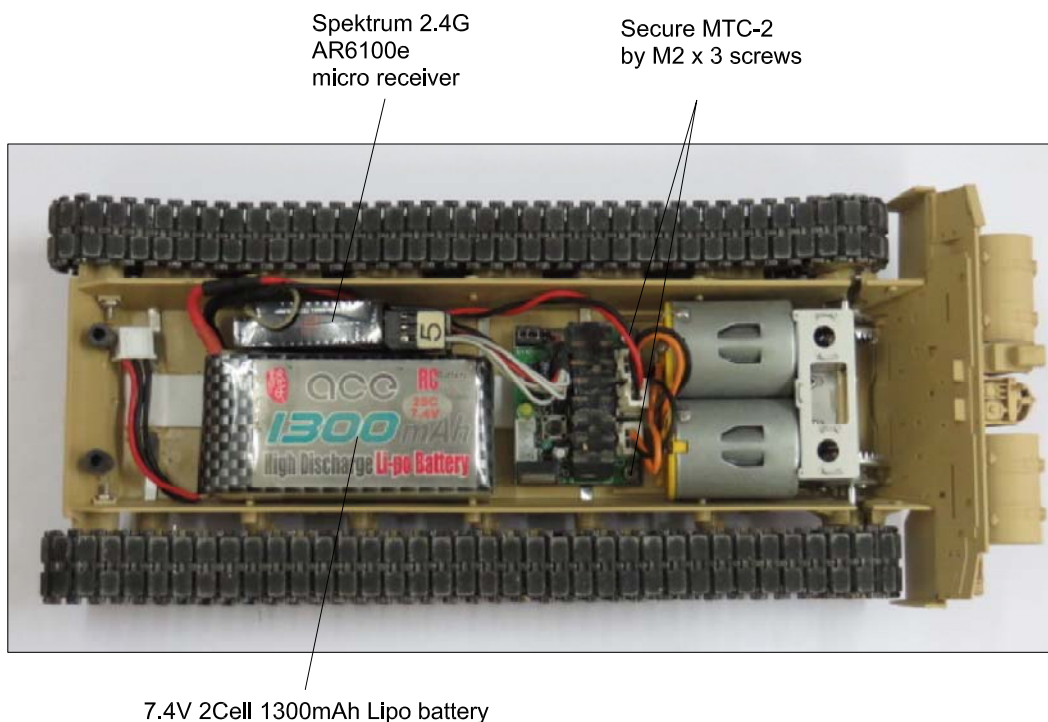
17 Battery

⚠ Lipo battery can be dangerous if not use properly! Follow all safety precautions and always use a dedicated Lipo charger.

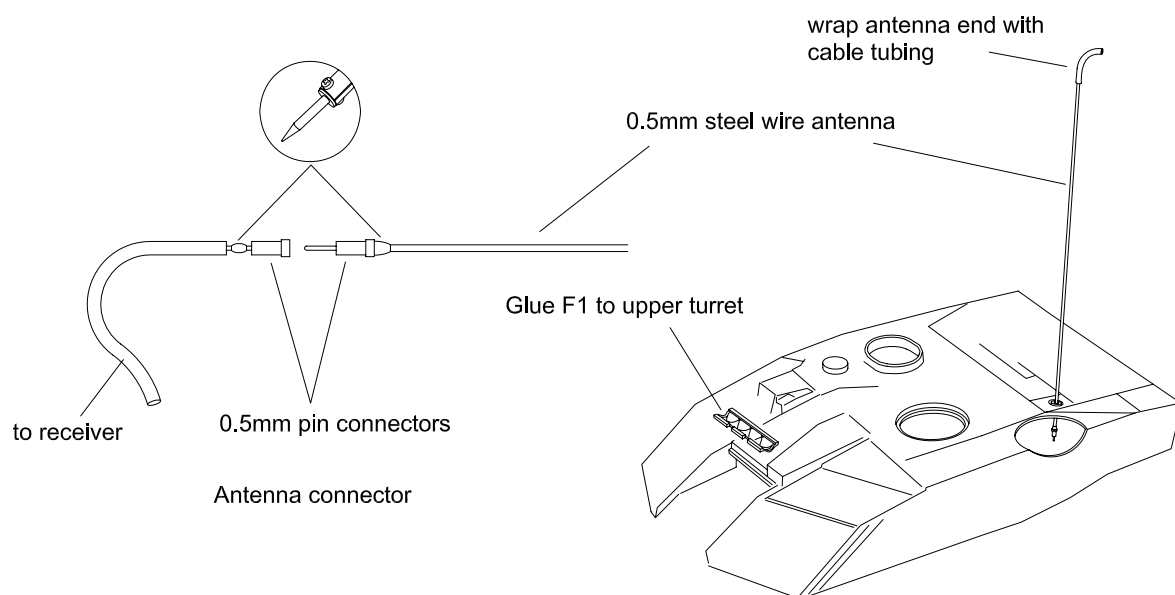
- 1) Use 7.4V/2Cell Lipo battery (800-1500mAh)
- 2) Make sure battery is small enough to put inside the lower hull.
- 3) Solder connector for MTC-2 as shown. Keep original connector for charging.



18 Lower hull connections



19 Antenna (for FM/AM receivers)



- ❗ 1) Antenna length depends on receiver used. See technical tips for details.
- 2) Construct antenna connector as shown.
- 3) Tie up cables neatly and away from moving parts.
- 4) To avoid interference, keep receiver and antenna away from motor cables.

20 Front reactive armor

